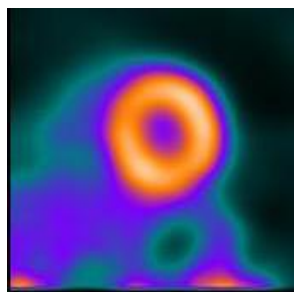


## When do we find out about the results of the LiiRA study?

Thanks to all of you, we are getting closer to our goal of 75 participants for the LiiRA study! We hope to complete recruitment in the next 9 months. After that, we still have much work to do. We will be sending blood samples out for testing levels of cholesterol and inflammation. We will also group the data you entered during your visit; for example, how many of you were on methotrexate, what was the average number of swollen joints among all participants. Lastly, we will pull the information from your cardiac PET tests.



Left: Image from cardiac PET scan.

Some of you might be thinking, that we already have some of the important results of your heart scans. We have the clinical results, but there is more information in the cardiac PETs that are not routinely used in the clinic.

The stress myocardial perfusion PET, more commonly known as a cardiac stress test you had is a routine clinical test done at Brigham and Women's Hospital. Generally, this test is recommended for patients when your doctor is concerned that you have heart disease. The cardiac stress test tells us how well blood gets to different areas of the heart. For patients with heart disease, the test will show that blood is not getting to all the areas of the heart that need it.



In LiiRA, we are using the cardiac PET tests to help us see what is going on in the smaller blood vessels. These blood vessels together are called the coronary microvasculature. Recently, studies have shown that the function of these small vessels that we previously did not measure, are important in understanding heart disease, and possibly play an even more important role in patients with RA.

I anticipate the overall findings from LiiRA will be ready by the end of 2021. However, we are starting to crunch the numbers for the baseline scans for the first 50 patients and will be sure to report back what we find in a future newsletter.

## Would you like to see something in our next newsletter? Contact us!

Katherine P. Liao, MD, MPH  
Principal Investigator

Marcy Bolster, MD  
MGH Principal Investigator

Charlotte Golnik  
Research Assistant  
617-525-7495  
[cwestgolnik@bwh.harvard.edu](mailto:cwestgolnik@bwh.harvard.edu)

Thany Seyok  
Research Assistant  
617-732-8169  
[tseyok@bwh.harvard.edu](mailto:tseyok@bwh.harvard.edu)

## Enrollment Numbers

Enrolled: 56  
Completed: 39  
Target: 75 patients over 3 years  
(We have <1 more years to go)



## Team Spotlight



Leanne joined the nuclear medicine research team in January 2019 and assists with the research cardiac PET scans. She enjoys running and waking up early to drink coffee with her cat Dobis.

Meet the rest of the team here:  
<http://www.liira.org/the-team.html>

## Our Sites



Want more information? Visit us at <http://www.liira.org>